

# *Quilters*

December 7-24, 2023



**1st**  
STAGE ■

*1st Stage*  
*With generous support from*

**Bootsie and Humo Humenansky  
and RBC Wealth Management**

# *Quilters*

**BOOK BY MOLLY NEWMAN AND BARBARA DAMASHEK,  
LYRICS AND MUSIC BY BARBARA DAMASHEK**

**DIRECTED BY  
DEIDRA LAWAN STARNES**

## *Featuring*

**EZINNE ELELE**  
JANE/ENSEMBLE

**KALEN ROBINSON\***  
DANA/ENSEMBLE

**LIZ WEBER**  
SARAH/ENSEMBLE

**PATRICIA HURLEY\***  
JENNY/ENSEMBLE

**O'MALLEY STEUERMAN**  
JODY/ENSEMBLE

**ABIGAIL WEINEL**  
LISA/ENSEMBLE

**MAGGIE LEIGH WALKER**  
MARGARET/ENSEMBLE

## *Production & Design*

**SOUND DESIGN  
KEVIN LEE ALEXANDER+**

**CHOREOGRAPHY  
PAULINE LAMB**

**STAGE MANAGER  
LUÍS RAMON CÓRDOVEZ**

**MUSIC DIRECTOR/ ORCHESTRATION  
JAKE NULL**

**COSTUME DESIGN  
CIDNEY FORKPAH**

**INTIMACY COORDINATOR  
LORRAINE RESSEGGGER-SLONE**

**SCENIC DESIGN  
SARAH BETH HALL**

**PROPS DESIGN  
ROOSTER SULTAN**

**LIGHTING DESIGN  
MIN JOO KIM+**

**ASSISTANT STAGE MANAGER  
SARAH USARY**

**ARTISTIC DIRECTOR  
ALEX LEVY**

**This production is made possible in part by gifts from  
our generous 1st Stage donors and with the support of**



\* Member of Actors' Equity Association, the Union of Professional Actors and Stage Managers in the United States, appearing under a Special Appearance Contract.  
+ Member, United Scenic Artists, Local USA 829

---

# The Creators

---



**MOLLY NEWMAN** began her playwriting career as co-author of *Quilters*, for which she was nominated for a Tony Award and a Helen Hayes Award. *Quilters* and her second play, *Shooting Stars*, have both been published by Dramatists Play Service and have been produced on the mainstages of several regional theatres, including The Mark Taper Forum, Actors Theatre of Louisville, Houston's Alley Theatre, The Kennedy Center, The Denver Center Theatre Company, and The Pittsburgh Public Theatre. Other writing

credits include the play *Yves* and the television comedies "The Larry Sanders Show" and "Frasier." She and her husband, Thomas Jones, reside in Los Angeles.



**BARBARA DAMASHEK** is best known as the director, composer/lyricist, and co-author of *Quilters*, for which she received three Tony nominations in 1985. Her next music theatre work built on oral histories, *Whereabouts Unknown*, was a finalist in the 1988 Susan Smith Blackburn playwright's competition. Ms. Damashek was profiled in the December 1993 issue of *American Theater Magazine*. Her representative directorial credits include: *Dancing at Lughnasa*, *The Firebugs*, *The Baltimore Waltz*, *Happy End*,

*Sunday In The Park With George*, *All's Well That Ends Well*, *The Taming Of The Shrew*, *Trumpets And Drums*, *The Cherry Orchard*, *Arms And The Man*, *Top Girls*, and *The White Crow*. Her regional theatre credits include: Trinity Repertory Company, South Coast Repertory, Oregon Shakespeare Festival, Shakespeare Santa Cruz, Mark Taper Forum, Denver Center Theatre, Pittsburgh Public Theatre, and American Repertory Theatre. As a composer, Ms. Damashek has created numerous original full-length and incidental scores for the theatre.



**This Holiday Season  
Give the gift of Live Theatre!**

Gift Certificates can be used at any regularly scheduled season performance.

Purchase by visiting the box office, online at [1stStage.org](http://1stStage.org), or by phone (703) 854-1856.

# Quilters Song List

## Act One

Pieces of Lives\*  
Rocky Road  
Little Babes That Sleep All Night\*\*  
Thread the Needle  
Cornelia  
The Windmill Song  
Are You Washed in the Blood of the Lamb? (by E. A. Hoffman)  
The Butterfly  
Pieces of Lives (reprise)  
Green, Green, Green  
The Needle's Eye\*\*\*

## Act Two

Hoedown ( traditional)  
Quiltin' and Dreamin"  
Pieces of Lives (reprise)  
Every Log in My House\*\*\*\*  
Land Where We'll Never Grow Old (by J.C. Moore)  
Who Will Count the Stitches?  
The Lord Don't Rain Down Manna  
Dandelion (lyrics by Oara J. Denton)\*\*\*\*\*  
Everything Has a Time  
Hands Around

\*First four lines from *The Quilt* by Dorothy Macfarlane

\*\* Lyrics from *Our Homes and Their Adornments* by Almon C. Varney

\*\*\* Chorus from the lyric of a traditional folk song

\*\*\*\* First line by Elinore Pruitt Stewart

\*\*\*\*\* From the poem *Blooming in the Fall*

## Acknowledgements

The authors would like gratefully to acknowledge the inspiration derived from the original quilt design "The Sun Sets on Sunbonnet Sue" as designed and executed by the Seamsters Union Local No. 500 of Lawrence, Kansas, and the inspiration provided by Grace Snyder and Nellie Snyder Yost in their book *No Time on My Hands*.

The authors would also like gratefully to acknowledge the following texts and individuals as invaluable resources in the development of the play: *New Discoveries in American Quilts* by Robert Bishop; *American Quilts and Coverlets* by Robert Bishop and Carleton L. Stafford; *Marguerite Ickis; Letters of a Woman Homesteader* by Elinore Pruitt Stewart; *Our Homes and Their Adornments* by Almon C. Varney; *American Folk Poetry -An Anthology* by Duncan Emrich; *Women's Diaries of the Westward Journey* by Lillian Schlissel; *Aunt Jane of Kentucky* by Eliza Calvert Hall; *Pioneer Women - Voices from the Kansas Frontier* by Joanna L. Stratton; *The Prairie Horne Companion*, Garrison Keilor, Minnesota Public Radio; *A Little Better Than Plumb* by Henry and Janice Holt Giles; *A Harvest Yet to Reap -A History of Prairie Women* by Linda Rasmussen, Loma Rasmussen, Candace Savage, and Anne Wheeler; and *Wisconsin Death Trip* by Michael Lesy.

# The Director



**DEIDRA LAWAN STARNES (ASSOCIATE ARTISTIC DIRECTOR, SHE/HER)** is a learning facilitator, performer, writer, and director. Her last 1st Stage directing project, *The Rainmaker* was nominated for a 2023 Helen Hayes Award for Most Outstanding Production. Other directing credits include *Ma Rainey's Black Bottom* nominated for six Helen Hayes awards, *'Night, Mother*, *A Civil War Christmas*, *For Colored Girls*, and *The Soul Collector*. Acting credits include *The Hula Hoopin' Queen*, *Mlima's Tale*, *The*

*Mamalogues*, *Passing Strange*, *Two Trains Running*, *Radio Golf*, *Seven Guitars*, *The Amen Corner*, *King Lear*, *Amadeus*, *Milk Like Sugar*, *Julius Caesar*, *Invisible Man*, and *Intimate Apparel*. She has a BA in Theatre from the UMD, an MA in Producing Film, TV, and Video from AU, and an MFA in Drama from UCONN.

## LOVE 1ST STAGE?

Volunteering is an incredible way to help the theatre and create community. Join us as a volunteer at [1stStage.org/volunteer](https://1stStage.org/volunteer)



## Deborah Ford Larson

Long and Foster Realtors

Specializing in Northern Virginia Properties since 1975

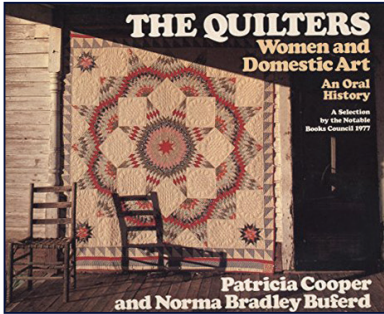
Also licensed in Sanibel and Captiva Islands, FL

CELL/TEXT: 703-966-9474

EMAIL: [deborah.larson@longandfoster.com](mailto:deborah.larson@longandfoster.com) or [sales@debbiehouses.com](mailto:sales@debbiehouses.com)

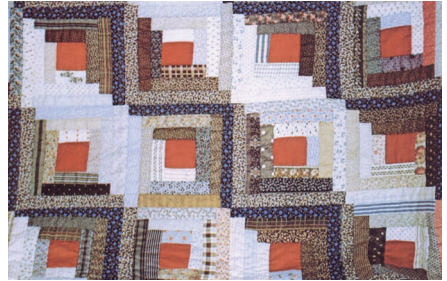
Visit my website: [www.debbiehouses.com](http://www.debbiehouses.com) It will make you smile!

# Quilters: A True Story



*Quilters* is based on the book *The Quilters: Women and Domestic Art* by Patricia Cooper and Norma Bradley Allen. This moving oral history is comprised of real accounts of pioneer life sourced from the diaries, letters, and interviews of women living on the plains of Texas and New Mexico in the mid-late nineteenth century.

“Patricia Cooper and Norma Bradley Allen decided to let the quilters speak for themselves. Their reminiscences and reflections, their spirit and strength are captured here, along with dazzling full-color photographs of their quilts juxtaposed with black-and-white photographs of the stark landscape in which the quilts were produced.”



*Log cabin, straight furrow pattern, circa 1900*



*First Baptist Church in New Mexico referenced in Quilters*



*Windmill in Texas*

*Farmhouse in the high plains, Texas*



*Quilters* (the musical) was nominated for six Tony Awards in 1985 including Best Musical and Best Original Score.

---

# The Cast

---



**EZINNE ELELE (JANE/ENSEMBLE, SHE/HER):** *Under the Sea with Dredgie Mcgee* (1st Stage). DC AREA: *This Girl Laughs, This Girl Cries, This Girl Does Nothing, Poetry for the People: The June Jordan Experience, A Chorus With-in Her, Day of Absence* (Helen Hayes Nomination: Ensemble)(Theater Alliance). REGIONAL: *Seeds of Change YA Tour* (Creede Repertory Theatre). EDUCATION: Howard University: BFA.



**PATRICIA HURLEY (JENNY/ENSEMBLE, SHE/HER)** is excited to be making her 1st Stage debut! Other credits include REGIONAL: *Mary Poppins* (Mary Poppins), *A Comedy of Tenors* (Racon), *Misalliance, Camelot* (Guinevere), *Triumph of Love* (Leonide), *Doubt* (Sr. James), *Elf, Annie, Sweeney Todd, Peter Pan* (Wendy), *The Heiress* (The Olney Theatre); *The Spitfire Grill* (Fulton Theatre); *Nate The Great, The Lion, the Witch, and the Wardrobe, Seussical The Musical, One Hundred Dress* (Imagination Stage); *Merrily We Roll Along* (Signature Theatre); *Lady Windermere's Fan* (The Shakespeare Theatre). EDUCATION: BM in Musical Theatre from The Catholic University's Benjamin T. Rome School of Music. [www.patriciahurley.com](http://www.patriciahurley.com).



**KALEN ROBINSON (DANA/ENSEMBLE, SHE/HER)** is excited to make her 1st Stage debut! She credits her success to God and her endlessly supportive village of family and friends who believe in her! REGIONAL: *Look Both Ways* (Ensemble) (Theater Alliance/The Kennedy Center); *Nate the Great* (Annie), *The Hula Hoopin' Queen* (Kameeka) (Imagination Stage); *Passing Strange* (Swing) (Signature Theatre); *Once on This Island* (Ti Moune)(Constellation Theatre); *Our Verse In Time to Come* (Sprite) (Folger Theatre); *Cinderella* (Stepsister), *25th Annual Putnam County Spelling Bee* (Logainne S.) (Fulton Theatre); *Spring Awakening* (Thea) (Round House Theatre); *Elf: The Musical* (Deb), *Grease* (Jan), *Rocky: the Musical* (Angie) (Toby's Dinner Theatre). EDUCATION: Howard University - BFA Musical Theatre. Instagram: @k\_nicole143

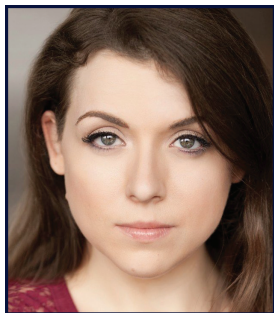


**O'MALLEY STEURMAN (JODY/ENSEMBLE, THEY/ THEM)** is a Baltimore-based actor, DRAGster, and poet. They graduated from Towson University with their BFA in Acting in May of 2020 and have since solo-traveled the U.S. to complete their research-based performance project and series entitled "so, what are you gonna do next?". Local Credits: *Tiny Beautiful Things, Our Town* (Baltimore Center Stage); *Squidbury* (Truopenny Projects); BCS Young Playwrights Festival 2022 (Baltimore Center Stage), *He Do the Police in Different Voices* (The Acme Corporation); *Covid Monologues* (Single Carrot Theatre & Strand Theater Co.). Get hip here, [www.omalleysteurman.com](http://www.omalleysteurman.com) and here @omalleysturman on instagram.

---

# The Cast

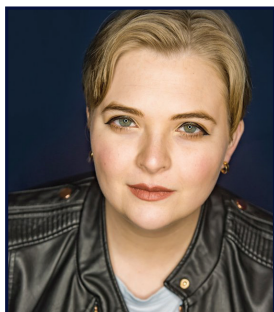
---



**MAGGIE LEIGH WALKER (MARGARET/ENSEMBLE, SHE/HER)** *Bat Boy* (Ron/Mayor Maggie)(1st Stage); *Hands on a Hardbody* (Ensemble), *Elves and the Shoemaker* (Fiona) (Keegan Theatre); *The Who's Tommy* (Acid Queen) (Open Circle Theatre); *Pinkalicious* (u/s) (Adventure Theatre-MTC); *Hairspray* (Tracy Turnblad), *The Sound of Music* (Sister Berthe) (Midtown Arts Center). She is a graduate of the Catholic University of America.



**LIZ WEBER (SARAH/ENSEMBLE, SHE/HER)** Credits include *Women Playing Hamlet* (Gwen) (Workhouse for the Performing Arts); *Heroes of the Fourth Turning* (Gina U/S) (Studio Theatre); *Company* (Joanne) (Cumberland Regional Theatre); *The Music Man in Concert* (Eulalie Shinn) (The Kennedy Center Concert Hall), *William Walton's Façade* (Narrator) (Barns of Rose Hill), *Grand Hotel* (Russian Ballerina) (Signature Theatre), *Helen on Wheels* (Helen) and *Prepping for Widowhood* (Thelma) (Best Medicine Repertory Theater). Liz worked in radio for many years, hosted a radio show called Sunday Showtunes on 99.5FM, and voiced commercials for Clear Channel Radio DC area stations. She toured nationally with Music Theatre Associates, garnered a Helen Hayes nomination for *Me & My Girl*, and is a graduate of the Catholic University of America.



**ABIGAIL WEINEL (LISA/ENSEMBLE, SHE/HER)** is an alumni of The National Theatre Institute. Past Credits include *The Wizard of Oz* (Lion/Aunt Em,) *Rent* (Featured Ensemble,) *Rapunzarella White* (Rapunzel,) *The Full Monty* (Vicki Nichols,) *The Farce Day of Christmas* (Karen,) *The Pajama Game* (Mae,) *Company* (Joanne,) *Newsies* (Medda Larkin,) and *Anything Goes* (Reno Sweeney.) Abigail also works as a Fight and Dance Choreographer. Past credits Include *She Kills Monsters*, *Rent*, *Evil Dead*, *Bright Star*, *Mamma Mia*, *Godspell*, and *Little Shop of Horrors*.

## COMMUNITY CONVERSATIONS

**Connecting our community through artwork, stories, and conversation.**

### *Following the 2pm Performance*

#### **12/9/23: Meet the Design Team**

Join us in conversation with members of the Design Team for *Quilters* about creating the beautiful world of this stunning musical.

#### **12/10/23: Meet the Director**

Chat with 1st Stage Associate Artistic Director and director of *Quilters*, Deidra LaWan Starnes, about what this musical means to her and the process of bringing it to the stage.

#### **12/16/23: Meet the Cast**

Join us in chatting with the cast of *Quilters* about bringing the stories of these women to life.



# The Production Team

**KEVIN LEE ALEXANDER (SOUND DESIGNER, HE/HIM)** is excited to join 1st Stage on this production of *Quilters*. Recent regional credits include *Hula Hoopin' Queen* (Imagination Stage/Childsplay Theatre); *In the Heights* (NextStop Theatre); *Bob Marley's Three Little Birds* (First Stage Milwaukee); *Acoustic Rooster's Barnyard Boogie* (Kennedy Center's Theatre for Young Audiences); *Once on this Island* (Constellation Theatre); *Hair: The American Tribal Love-Rock Musical* and *Oliver* (New Repertory Theatre); *Huckleberry Finn's Big River* (Adventure Theatre MTC); *Bright Star* (Lyric Theatre of Oklahoma); and *The Migration: Reflections of Jacob Lawrence* (Step Afrika, National Tour). Kevin holds a Master of Science in Entertainment Business from Full Sail University, and a Bachelor of Arts in Theatre from the University of Maryland. He is also a member of IATSE Local USA 829.

**LUÍS RAMON CÓRDOVEZ (STAGE MANAGER, THEY/THEM)** Luís is a Puerto Rican/Taíno Stage Manager and Actor based in DC, who is very excited to be a part of this season at 1st Stage! They are overjoyed to get the chance to work with collaborators new and old, to bring pieces of these women's lives to Virginia! They would also like to dedicate a few words to one of their greatest supporters: Nanichi' Cameron, uara' da eracra, roco zi da asu. Previous stage management credits include *Hula Hoopin' Queen* (Imagination Stage, PSM); *Tick Tick Boom* (Monumental Theater Company, PSM); *Acoustic Rooster's Barnyard Boogie: starring Indigo Blume* (Kennedy Center TYA, ASM).

**CIDNEY FORKPAH (COSTUME DESIGNER, SHE/HER)** Chosen credits include: *Bathing in Moonlight, Kumanana!, Revoltosa*, (Gala Hispanic Theatre); *Diagnosed* (Creative Cauldron); Associate Costume Designer: *Look Both Ways* (Theatre Alliance and The Kennedy Center); the national tour of *On Your Feet!, On Your Feet! En Español* (Gala Hispanic Theatre); *Show Way* (The Kennedy Center); *Our Verse in Time to Come* (Folger Theatre); *The Piano Lesson* (Prince George's Community College); *Julius Caesar* and *The Cherry Orchard* (STC's The Academy for Classical Acting). Wardrobe Associate for *The Winter's Tale, Midsummer Night's Dream, The Merry Wives of Windsor, Love's Labour's Lost, Saint Joan, Sense & Sensibility*, and *Nell Gwynn* (Folger Theatre). Sidney holds a BA from Lees-McRae College in Performing Arts Studies.

**SARAH BETH HALL (SCENIC DESIGNER/ SHE/HER)** is a freelance scenic designer based in the greater DC area. Select local credits include: *Orlando* (Constellation Theatre); *A Year with Frog and Toad* (Imagination Stage); *Sometimes the Rain, Sometimes the Sea* (Rorschach Theatre); *Frankenstein* (NextStop Theatre Company); *Make Way for Ducklings* (Adventure Theatre); *Crimes of the Heart, Rejoicing in Broken Pieces* (Catholic University). Select regional credits include: *The Rose Tattoo, The Caretaker* (Shakespeare Theatre of NJ); *God of Carnage* (The Cape Playhouse); *The Hobbit* (Adirondack Theatre Festival); *Little Women* (Cincinnati Shakespeare Company); *Neil Gaiman's Neverwhere, Listen for the Light, SuperTrue, The Fisherman's Wife* (Know Theatre); *Metamorphoses* (University of Rochester); *Bonnie & Clyde, Pippin, Mamma Mia!* (Summer Rep Theatre Festival). Sarahbethhalldesign.com

**MINJOO KIM (LIGHTING DESIGNER, SHE/HER)** is an internationally working lighting designer. Previous at 1st Stage *The Rainmaker*. Selective DC credits include *Fat Ham* (Studio Theatre); *Ink* (Round House); *King of the Yeas* (Signature Theatre); and *The Brothers Paranormal* (Olney Theatre). Regional credits include *Demom* (The Bushwick Starr); *American Fast* (City Theatre); *The Chief* (Pittsburgh Public Theater); *The Royale* (Kansas City Rep); *A Few Good Men* (Bristol Riverside Theatre); *Violet* (TheatreSquared); *Life Sucks* (Cygnet Theatre); *One in Two* (Diversionary Theatre). International credits include South Korea; *The Two* (Space Owl); *Crimson Girl* (Dongsoong Art Center); *Die or Not* (Seoul Art Space Mullae); China; *Mask on/off* (Shanghai Dramatic Arts Centre). Her work *The Royale* was selected for the National Exhibit at Prague Quadrennial in 2023. Website: minjoo-design.com

# The Production Team

**PAULINE LAMB (CHOREOGRAPHER, SHE/HER)** is an area performer, designer, educator, and choreographer who is ELATED to bring dance and life to this beautiful production! Previous choreography credits include *Pippin* (Imagination Stage ISPE); *Out of the Vineyard* (asst. Joe's Movement Emporium); *Legally Blonde* (Walt Whitman High); *Use All Available Doors* (Pinky Swear); and *Assassins* (Pallas Theater Collective) among others. She sends endless love to our fearless leader, Deidra, for bringing this awesome team together!

**JAKE NULL (MUSIC DIRECTOR, HE/HIM)** loves music, sound design, recording, IT, general nerd-dom, and of course his wife! He could not be prouder of these phenomenal individuals and can't wait to share this production with you! He's very proud to finally be working at 1st Stage, and wants to give a huge thank you to Deidra for everything! Regional Music Director Credits Include: *In the Heights* (NextStop Theatre Company); *Mary Poppins*, *The Drowsy Chaperone*, *1776*, *A Christmas Story* (Levine Music Theatre); *The Toxic Avenger: The Musical* (Rorschach Theatre); *Hands on a Hardbody*, *Chicago* (HHA Receptient), *Big Fish*, *Parade*, *Next to Normal* (HHA Nomination), *American Idiot*, *Evening Train*, *Dogfight*, *Hair* (HHA Nomination), *The Full Monty*, *Spring Awakening* (HHA Nomination), *Working*, *National Pastime* (Keegan Theatre); *Urinetown* (HHA Nomination), *Avenue Q* (HHA Receptient) (Constellation Theatre Company); *To Reach the Unreachable Star*, *The Who's Tommy* (Open Circle Theatre); *The 27 Club* (Capital Fringe).

**LORRAINE RESSEGGER-SLONE (INTIMACY COORDINATOR, SHE/HER)** *The Last Match*, *The Rainmaker*, *How the Light Gets In*, *The Phlebotomist*, *Secret Things*, *Ma Rainey's Black Bottom* (1st Stage); *The Garden*, *How to Catch Creation* (Baltimore Center Stage); *Spring Awakening*; *Woolly Mammoth: Describe the Night*, *BLKS*, *Botticelli in the Fire*, *Oedipus el Rey*, *Mr. Burns, a Post-Electric Play* (Round House Theatre), *Much Ado About Nothing*, *Our Town*, *The Silent Woman* (Shakespeare Theatre Company); *Pramkicker* (Taffety Punk), *Romeo and Juliet*, *Titus Andronicus* (Taffety Punk Riot Grrrls), *Tis a Pity She's a Whore* (Academy for Classical Acting) Theatre at Monmouth Summer Repertory 2022. Education—MFA: Virginia Commonwealth University.

**JORDAN PATNETT (AUDIO ENGINEER, SHE/THEY)** Jordan is excited to A1 1st Stage's production of *Quilters*. Jordan is a stagehand and sound designer who has previously worked on plays like *Sutta*, *Fallen*, assisted on *The Hunchback of Seville*, and musicals like *Big Fish* and *9-5*.

**ROOSTER SULTAN (PROPS DESIGN, SHE/HER)** is delighted to be working again with 1st Stage. Previous at 1st Stage *The Rainmaker*. She is an alum of Montgomery College and has a BFA in Theatre Design and Technology from The University of North Georgia. Some of her recent property design credits include: *25th Annual . . . Spelling Bee*; *The Nether*; *Dontrell Who Kissed the Sea*; *Electricidad* (Montgomery College); *Chemical Exile: Synthesis* (Rorschach Theatre); *The Pursued . . . The Tired* (Signature in the Schools). Rooster is a member of USITT - Chesapeake Section.  
[www.DesignedByRooster.com](http://www.DesignedByRooster.com)

**SARAH USARY (ASSISTANT STAGE MANAGER, SHE/HER)** is a stage manager based in northern Virginia. Previous credits—*The Chosen*, *The Last Match*, *The Member of the Wedding*, *Fly By Night*, *The Farnsworth Invention* (ASM), and *My Name is Asher Lev* (1st Stage); *Frankenstein*, *The Mountaintop*, *The Wolves*, *East of Eden* (NextStop Theatre Company); *She Kills Monsters* (Maryland Entertainment Group); *Assassins*, *Dracula* (Cumberland Theatre); *West Side Story* (SM), *Newsies*, *Mamma Mia!*, *Sweeney Todd*, *Little Shop of Horrors*, *My Fair Lady*, *The Pirates of Penzance* (ASM, Shenandoah Summer Music Theatre). Education—BFA Theatre Design and Production, Shenandoah University.

# The Production Team

**ALEX LEVY (ARTISTIC/ EXECUTIVE DIRECTOR, HE/HIM)** Alex's 1st Stage directing credits include *The Chosen*, *The Last Match*, *How the Light Gets In*, *The Phlebotomist*, *Secret Things*, *Trying*, *columbinus*, the American premiere of *Hero's Welcome*, the world premiere of *Swimming with Whales* (6 HH nominations including "Outstanding Director"), *The Farnsworth Invention* (6 HH Nominations including "Outstanding Director"), *Jesus Hopped the 'A' Train* (winner of 2 HH Awards and The BroadwayWorld Award for "Outstanding Production of a Play"), the regional premiere of *Trevor* (2018 Helen Hayes nomination for "Outstanding Production of a Play"), *Lobby Hero* (named Best Regional Revival of 2016 by *The Wall Street Journal*), *Proof*, *The Good Counselor* (BroadwayWorld DC Award for "Best Director of a Play"). Since Alex joined 1st Stage, the company has won several awards including the American Theatre Wing's "National Theatre Company Grant" and was named "One of America's most impressive smaller theater companies" by *The Wall Street Journal*. In addition, the company has won or been nominated for the Helen Hayes Award for "Outstanding Production" eight times. Alex holds an MFA in Directing from The University of California-Los Angeles.



1st Stage is thrilled to offer free reusable menstrual products in all of our bathrooms, thanks to a generous donation from Days For Girls Northern VA Chapter. For more information on Days For Girls NoVA, please visit <https://www.facebook.com/daysforgirlsnova>.

We want your feedback! To give feedback on our mission to support menstrual equity, please email [audrajacobs@1ststage.org](mailto:audrajacobs@1ststage.org).

## Join our Giving Quilt

As these artists quilt their stories onstage,  
we're quilting the story of 1st Stage with you!

**This holiday season, we hope you will consider  
making a gift and joining our Giving Quilt.**

Your support is not just the gift you give today. It's the stories, the community, and the pieces of your life you continue to share with us. As we connect the threads of our shared stories over the past year, please consider making a tax-deductible donation to continue "quilting the Legacy of 1st Stage".

Make a gift at [www.1stStage.org](http://www.1stStage.org), stop by the box office desk,  
or send a check to PO Box 9384, Tysons, VA 22102.

**THANK YOU  
RESTAURANT PARTNERS**

**NORTH  
ITALIA**



# NEXT AT 1st Stage

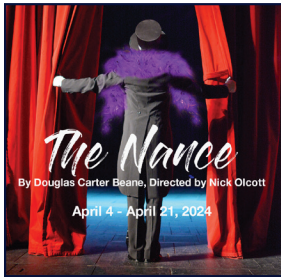


**Shutter Sisters**, February 1 to 18, 2024

By Mansa Ra.

Directed by Eric Ruffin.

This sweet and funny tale explores the parallel lives of two women. A white woman named Michael struggles with strained family relationships at her adopted mother's funeral, while a Black woman named Mykal navigates a challenge of her own: becoming an empty nester. A surrealist journey through womanhood, identity, and what it means to belong. "Shutter Sisters is a very enjoyable and empathetic look at how connections between mothers, daughters, friends, and even strangers impact the story of your life." -*Broadway World*



**The Nance**, April 4 to 21, 2024

By Douglas Carter Beane.

Directed by Nick Olcott.

This witty, Tony Award-Nominated play, filled with music, dance, and comedy sketches, introduces us to Chauncey Miles, a gay burlesque performer at the Irving Place Theater. *The Nance* recreates the naughty, raucous world of burlesque's heyday and tells the backstage story of Chauncey and his fellow performers. At a time when it was easy to play gay and dangerous to be gay, Chauncey's uproarious antics on the stage stand out in marked contrast to his offstage life. A "funny but bittersweet portrait of a vanished era". -*The Chicago Tribune*



**Postcards from Ihatov**, June 6 to 23, 2024

Created and directed by Natsu Onoda Power.

**WORLD PREMIERE**

Adapted from the works of Kenji Miyazawa including the classic "Night on the Galactic Railroad." This spellbinding tale of friendship, self-discovery, and the transcendent power of imagination takes audiences on a cosmic journey through the stars. This world premiere production of visual theater is bursting with imagination and spectacle that the whole family can enjoy.

## SUBSCRIBE AND SAVE

SCAN ME



- ✓ Invest in 1st Stage as a subscriber.
- ✓ Reserve your seat for the full season.
- ✓ Save over 50% on single tickets.

Most importantly, you are committing to artists, shared experiences, communication and conversation, and the celebration of the stories that both reflect and challenge our ideas. All Subscriptions and Flex Passes include exclusive invitations to Opening Night Receptions and special events.

**SUBSCRIBE TODAY AT THE BOX OFFICE  
OR VISIT [WWW.1STSTAGE.ORG/SUBSCRIPTIONS](http://WWW.1STSTAGE.ORG/SUBSCRIPTIONS)**

# A SPECIAL THANK YOU TO THE PRODUCER OF

## *Quilters*

### **BOOTSIE AND HUMO HUMENANSKY**



With help, I once wrote a poem titled “The Weave” to be a “memory piece” providing insights into the lives of 110 international students and their individual contribution to the fabric of a shared encounter called Harvard. After more than 30 years, it reminds us of how we touched one another and how that contact enriched our personal

thinking and group personas. *Quilters* depict experiences and moments of a frontier family of women covering the sweep of their lives – each creating a patch of fabric that stitched together forms a brilliant quilt with a broader design and impact. It prompts us to acknowledge our bonded ties exceed the import of our discrete flashes of life. In this way, “The Weave” and *Quilters* are similar. In today’s chaotic environment, my wife and I believe our country needs to remember what ties us together more so than specific issues that drive us apart. For this reason, we were happy to become producers to this play that indirectly reinforces that belief.

#### **BECOME A PRODUCER**

Producerships give 1st Stage the foundation to take risks and offer the necessary resources to a production’s creative team to realize their vision. It is a vital partnership that provides the opportunity to elevate the work to a higher level, bringing in the most talented artists and designers to create world-class theatre right here in Tysons.

**Interested in what it means to be a 1st Stage producer?**

**Contact Heidi Fortune Picker for details at [heidifortune@1stStage.org](mailto:heidifortune@1stStage.org)**

A SPECIAL THANK YOU  
CORPORATE PRODUCER FOR

# *Quilters*



**Wealth  
Management**



## *Quilters Band*

Led by Music Director Jake Null  
Samuel Hall- Violin/ Cello  
Ben Young- Guitar 1  
Brad Emmett- Guitar 2  
Jason Wilson- Bass  
Dana Gardner- Woodwinds  
Jake Null- Keys

*Thank You*

*Quilt design and construction of Legacy Quilt  
by Lee Michele Rosenthal*



**Proud  
to be an  
ArtsFairfax  
Grantee!**





# Madeline Wikler and Kathy Dodson

## In the Gallery



Madeline Wikler has been drawing, painting, potting, and photographing all of her life, but it was not until she and her husband bought a summer home in Maine in 1990 that she began her serious study of watercolor. She enjoys the challenges and surprises that watercolor brings, as well as the freshness and transparency of the medium. In addition to plein air (outside) painting, she also paints buildings, florals, landscapes, and figures in her studio. Madeline's Rainbow series began as an experiment in pouring paint and has culminated in the work you see here.

Kathy Dodson has combined her expertise as a seamstress and quilter with her art to create whimsical animals adorned with patterns culled from her vast fabric supplies. Kathy began painting after her retirement, creating still lifes, florals, and outdoor scenes. Her "Fabrications" series started with a zebra, and before she knew it, she had created an entire menagerie. Photos: *Zebra*, watercolor, Kathy Dodson; *Parrots*, watercolor, Madeline Wikler

Gallery Curator: Deborah Conn, [deborahconn@verizon.net](mailto:deborahconn@verizon.net)



## Tyson's Realty Inc.

PAULINE THOMPSON

*Founder, President, CEO*

8321 Old Courthouse Road -140  
Tysons Corner, VA 22182

Off. 703-893-5700  
Cell: 703-599-1488  
Fax: 703-893-6859

EM: [TYSONSREALTY@AOL.COM](mailto:TYSONSREALTY@AOL.COM)

Retail, Office, Industrial, Apts. Asset Mgt.



PROJECTED  
OPENING  
2024

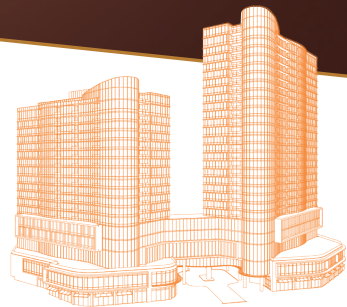
defy expectations.

## DISCOVER LUXURY OF A DIFFERENT KIND

Introducing The Mather in Tysons, Virginia—  
a forward-thinking destination for those 62  
and better.

Forget what you thought you knew about  
senior living. Inquire today.

(703) 348.8522 | [themathertysonson.com](http://themathertysonson.com)



**the**  
*mather*

Delight • Revel • Aspire



3/22 PB 357

# THANK YOU OUR DONORS

(November 25, 2022 – November 24, 2023)

Thank you to all who make our work possible.

**\$30,000 and above**  
Elizabeth R. Benson  
Howard and Elaine Forman  
Sandy Laeser  
Martha and John McGrane  
Margaret Sheeran and  
Tom Manteuffel  
Jack Wilbern and  
Patricia Tetro

**\$15,000-\$29,999**  
Anonymous (2)  
Jacqueline Cookston and  
Anne Nolan  
John and Meg Hauge  
Bootsie and  
Humo Humenansky  
Kay Rzasza and Deb Crierie  
Kathleen Gilles Seidel

**\$10,000-\$14,999**  
Eleanor and  
Richard Bochner  
Matt Korn and Cindy Miller  
Susan and Donald Levy

**\$5,000-\$9,999**  
Theodore Gold and  
Margaret Gering  
Kathleen and  
Anthony LaBarbera  
Doug and Diane Lovejoy  
Kathy Maher  
Eileen Mandell  
William T. Newman Jr. and  
Sheila C. Johnson  
Doug and Diana Pinkham  
Adrienne and Ed Schmitz

**\$2,500-\$4,999**  
Robert Cookston  
Mary Ann Elliott  
Thomas Goodwin and  
Cheryl Matheis  
Judy Groner  
Mike and Tara Levy  
Alan McAdams and  
Ellen Dykes  
John Perry and Jeff Mintzer  
Thomas Pierce and  
Lu Ann Dillon  
Joseph Warin and  
Julie Lansaw Warin  
Rochelle Zohn

**\$1,000-\$2,499**  
Donald Adams and  
Ellen Maland  
Paul and Nancy Allard  
Gene and Pam Bacher  
Larry Baucom  
Laura Bromberg and  
Robert Martin  
Carol Caparosa  
Barbara Carroll and  
Jon Picker  
Mitch and Laurie Falter  
Virginia Geoffrey and  
John Andelin  
Terrie Hauck  
Barbara Hawthorn  
Dori Hazan  
Robert Hebdan  
Gail and John Howell  
Marty Hurwitz,  
in memory of

Bonnie Hurwitz  
Chidi and Faith James  
Judy Jobbitt and  
Thomas Marshall  
Jane and Brad Kalbfeld  
Bonnie Kawecki  
Renee Klish  
Hannah and Chuck Lefton  
Alex Levy  
Peter Lewis  
Adrian and Marcia Lund  
Wes MacAdam  
Debbie Massey  
Melissa and  
Gene Nicholson  
Karen Pyeatt  
Ray Saulino and  
Debbie Cerulli  
Lynne Silverstein,  
in memory of  
Bobby Silverstein  
Denny and Jan Towers  
Janet and John Tyse  
Paul and Katie Westpheling

**\$500-\$999**  
Anonymous (3)  
Lunette Arledge  
Lori and Paul Carbonneau  
José Carrasquillo  
Bonnie Carroll and  
Roy Cooper  
Phyllis Cela and Gary Sidell  
Ed Comer  
Deborah Conn and  
Howard Cincotta  
Tim and Anna Donaldson  
Linda Gehr  
Bob Guberman  
David Hindin and  
Sally Bloomberg  
Barry Holt and  
Julie Samuels  
Dr. Sari Hornstein  
Lois Ireland and  
Pierre Huggins  
James and Jean Keeney  
Keith and Bari Livingston  
T. Michael Louden  
Ann Makowski  
Daniel and Judith Mills  
Marsha Mofson and  
Jeff Dannick  
Ronald and Ellen Neubauer  
Katie Newland  
Craig Pascal  
David and Joy Peyton  
Carol and Doug Powell  
Wilma Probst  
Wayne and  
Marcy Rehberger  
Mark and Ginni Richards  
Jeffrey and  
Daniele Robbins  
Mark and  
Donna Samlanet  
James and  
Beverly Seacord  
Patricia Seale  
Nigel and Linda Smyth  
Carlos Velazquez  
Linda Young  
and Steve Sibener

**\$250-\$499**  
Anonymous  
Caren Anton  
John and Patricia Ball  
Michael and Lissa Barry  
Barbara Bear  
Sabra Benson  
Marilynn Bianco  
Joan Botuck  
Sandra Buratti  
Mark and Cynthia Carter  
Susan Christie  
Linda and John Cogdill  
Carolyn and Ladd Connell  
Lisa and Bruce Cort  
Isabelle Cummings  
Chris and Angela Ehemann  
Nancy Finken  
Mark and  
Diana Fredenburg  
Gerald Gleason and  
Naomi Robin  
Gail Gulliksen  
Rita and David Gustin  
Marie Humel and  
John Butler  
Nancy Hopkins  
Lisa Hoskins  
William and Debbi Iwig  
Caleen and Carl Jennings  
Sherry Joslin  
Caren Kamberg and  
Michael Kosecoff  
Warren and Barbara Lewis  
Sonya Livingston  
Paul Nicholas  
Phil and  
Chris Niedzielski-Eichner  
Stephen and Kathy O'Brien  
Stan Peabody  
Rebecca Perez  
Heidi and Ari Picker  
Sue and Jim Price  
Neil and Laura Romstedt  
Diane Rosacker  
Rosemary Schwartzbard  
Allan Shapiro and  
Jaye Helferd  
Sam and Susan Simon  
Mike and Leigh Sneed  
Lloyd Starns  
Christine and  
Ken Westbrook  
Barbara and John Wille

**\$100-\$249**  
Anonymous (10)  
Mary Ann Allin  
Anthony Anikeeff  
Rekha and Craig Arness  
Jessica Balick  
The Ballard Family  
Charlie Barnett  
Micheale Battles  
Sheryl Beitsch and  
Jerry Menchhoff  
Bill and Fern Bekenstein  
George and Gail Bergquist  
Sue Ann Berlin  
Alice Bidwell  
Sheila Billingsley  
John and Cindy Blakeley

Shirley and  
Dennis Bloomquist  
Edmund and  
Dolores Bujalski  
Dominique Callins  
Michael and  
Napapan Carpenter  
Suzanne Caulfield  
Robert Cheek  
Barbara and Douglas Cobb  
Ray Colangelo and  
Ilene Gast  
Barbara Tragakis Conner  
Louise K. Crane  
Bernard DeLeo and  
Rebecca Hill  
Lynda and Larry Dentler  
Melanie and  
James Douglas  
Amy and Bo Duma  
Daniel and Karen Duval  
Arlene Edwards  
Kenyon and Betsy Erickson  
Diane Fairchild  
Andrea Field  
Ross and Kim Fishkind  
Carole and Barry Forman  
Amanda Forstrom  
Tom and Jenny Fortune  
Dagne Fulcher  
Eleanor Gafton  
Fred Gerke  
Stephen Gold and  
Wini Atlas  
Nadja Golding  
Gailmarie Goldrick  
Diane Gorman  
Gabe Greene and  
Mia Fiorella  
Jonathan Groisser and  
Hana Newcomb  
Jim and Julie Hamilton  
Thomas Harter  
Rosemary Hartman  
Richard Haynes  
Kristine Heine  
Alan Helgerman  
Susan Hennessy  
Yuki and  
Richard Henninger  
Gregory and  
Joy Hildeman  
Thomas Holzman and  
Alison Drucker  
Elizabeth Jablin  
Barbara J. Jacob and  
Douglas Kleine  
Peter Jessel  
Bryan and Karen Kinsey  
Katherine and  
Robert Kroehler  
Eileen Lawrence and  
Robert Greenfield  
LuAnn and Len Levitt  
Erik and Schana Levy  
Roman and Beth Lewyckyj  
Nancy Limprecht and  
Rick Haines  
Michael Lipsky and  
Mariette Newcomb  
Sailini and Sandeep Lohia  
Donna and Marty Malarkey  
Judith Macon

# THANK YOU OUR DONORS

(November 25, 2022 – November 24, 2023)

Thank you to all who make our work possible.

## \$100-\$249 continued

Madeline and  
Gerald Malovany  
Ron and Jenny Mancus  
John and Karen Mansfield  
Stella Matalas  
Susan McCrackin and  
Judy Yaggie  
James and  
Jennifer McGrane  
Sandy McKenzie  
Jennifer Mendenhall and  
Michael Kramer  
Mable Mestre  
Janet Minkler  
Nell Minow and  
David Apatoff  
Lyn Moen  
Marcela Montes  
Kristin Moyer  
Jasper Napoli  
Kathy and Reed Nibley

Ruth and  
John Nowjack-Raymer  
Mary Jo Offringa  
James and  
Susan Pittleman  
Terry Quist  
Roz Rakoff  
Judy Ratliff  
Terri and Donald Rea  
Steven and  
Pamela Rearden  
Norma Jean Reck  
Paul and Mary Reistrup  
Richard Yeates Richards  
Freddie Rios  
Edward and  
Cherise Robinson  
Victoria Robinson  
Gay Rogers  
Robert Rosenberg and  
Mary Ann Kennedy  
Gail Rosner

Lucia Rothman-Denes  
Mary Rouvelas  
Elise Ruedi  
Jean Schreier and  
Margarita Lopez  
Carol Schrier-Polak and  
Rudy Polak  
Sandra and David Sellers  
Romy and Joram Shenhar  
Michelle Simoneau  
Lucienne and  
Henry Skopek  
Lisa Sockett and  
Andrew Joskow  
Jolanda Spata  
Steven Spayd  
Barry Sullivan and  
Alan Scott  
Mary Szpanka  
David and Susan Talley  
Ilene and  
Stan Trachtenberg

Amparo Trujillo  
Martha Trunk  
Brian Wallace and  
Amy Walker  
Andrea Wallen  
Karen and  
Michael Weinberger  
Chris, Patty, and  
Sean Westra  
Michael Westra  
Gregory Williams  
Ted Williams  
John Wilson  
Sarah and Matt Wilson  
Joey and Effie Wingate  
Kailyn Witman  
Gail and Chris Wollenberg  
Romney Wright and  
Paul Cohen  
Joan Zeigler

## CORPORATE & FOUNDATION

American Theatre Wing  
ARTSFAIRFAX  
Arts Forward Fund  
Bazin's on Church  
Boeing Company  
BOWA  
Bright Funds Foundation  
bwdarchitects  
BDO  
Caplin Foundation  
Catalogue for Philanthropy  
Compass Pro Bono  
Clarity  
Elderberry Cottages Company  
Ekko Title  
Five Star Bank  
Exxon Mobil Foundation  
The Georgelas Group  
Goldman, Sachs and Co.  
Google, Inc.  
Greenwich Group International

Harris Design, Inc.  
HBC Group/KW  
India Hicks  
HMA Associates, Inc.  
International Monetary Fund  
Kositzka, Wicks and Company  
The Ruth and Hal Launders  
Charitable Trust  
The David and Reva Logan  
Foundation  
LS Technologies, LLC  
The Mather Tysons  
McLean Community Foundation  
The Meridian Group  
The Morgan Fund  
The Morningstar Foundation  
The National Endowment for the Arts  
The Neal Team  
Nostos  
Paul French Bakery & Café  
Pillar to Post

Pulcinella  
M. Raina Associates  
Rappaport Management Company  
RBC Wealth Management  
ReFrame Wealth  
The Reinsch Pierce  
Family Foundation  
The Revada Foundation  
The Ross Roberts Fund,  
The Community Foundation  
of Northern Virginia  
Seasons 52  
The Share Fund  
The Shubert Foundation  
The Sumac Foundation  
Summit Community Bank  
Sweet 120, LLC  
Virginia Commission for the Arts  
Walsh, Colucci, Lubeley and Walsh  
YourCause, LLC

In addition to offering **CAPTIONING** and **AUDIO DESCRIPTION** for selected performances throughout the season,  
**1st Stage now offers ASSISTIVE LISTENING DEVICES** for all performances.

### CAPTIONED and AUDIO-DESCRIBED PERFORMANCES



Open Captioned Performances  
All performances December 14 - 17

Audio Described Performance  
TDB



### ASSISTIVE LISTENING DEVICES

Assistive Listening Devices (ALDs) are available at every performance. Please request services at the box office when you check in.

Accessibility services are made possible through the generous support of the McLean Community Foundation and ARTSFAIRFAX.

# THANK YOU OUR DONORS

(November 25, 2022 – November 24, 2023)  
Thank you to all who make our work possible.

## PRIME SQUARE FEET

“Prime Square Feet” are highly visible markers of your generous support for 1st Stage.  
To purchase “Prime Square Feet” in the theatre contact Heidi Fortune Picker at  
heidifortune@1stStage.org.

**Office** – Kate Levy  
**Lobby** – Kathleen Gilles Seidel  
**Stage** – LS Technologies LLC

**Hallway Wall** – Mark Krikstan  
**Hallway Wall** – Deb Crierie  
**Hallway Wall** – Jane Margulies Kalbfeld

### Reception and Hallways

In Honor of Dick Laeser  
In Memory of Steve A. Mandell  
In Memory of Quin Mulcahy Kaweck  
In Memory of Ben Saypol  
**ARTSFAIRFAX**  
Elizabeth Benson  
John and Meg Hauge  
Bootsie and Humo  
**bwd**architects  
Jacqueline Cookston  
Patty Dyer  
Elderberry Cottages Company  
Howard and Elaine Forman  
Theodore Gold and Margaret Gering  
Toni Harrington and Ed Sumner  
Harris Design, Inc.

Holly Hassett  
Thomas Goodwin and  
Mary Cheryl Matheis  
Lynne and Robert Ketcham  
Matt Korn and Cindy Miller  
Kathleen and Anthony LaBarbera  
Susan and Donald Levy  
Doug and Diane Lovejoy  
Kathy Maher  
Tom Manteuffel and  
Margaret Sheeran  
The Mather  
Martha and John McGrane  
McLean Community Foundation  
The Morgan Fund of the  
Seattle Foundation

The National Endowment for the Arts  
Diana and Doug Pinkham  
RBC Wealth Management  
ReFrame Wealth  
Reinsch Companies  
The Reinsch Pierce Foundation  
The Revada Foundation  
The Share Fund  
The Shubert Foundation  
Linda Smyth  
Virginia Commission for the Arts  
Kathie and Paul Westpheling  
Jack Wilbern and Patricia Tetro  
Rochelle Zohn

Every effort has been made to ensure that donor lists are accurate. If your name is misspelled or omitted, please accept our apologies and inform 1st Stage at (703) 854-1856 or email the theatre at [boxoffice@1stStage.org](mailto:boxoffice@1stStage.org).



Thank you to Fiore Montessori and our Learning and Engagement Facilitators for their work in building a theatre program partnership

A huge and heartfelt thank you to Nancy and Sandra at The Quilt Shop of McLean for their quilt donations and expertise. Throughout this process, their hearts have been felt in every stitch. Check out their wonderful work at [www.quiltdoctor.com](http://www.quiltdoctor.com)!



**THE KEEGAN THEATRE**  
An **IRISH Carol**  
by **Matthew J. Keenan**  
**DECEMBER 2-31**  
**KEEGAN'S HOLIDAY TRADITION!**  
TICKETS & INFO AT  
[WWW.KEEGANTHEATRE.COM](http://WWW.KEEGANTHEATRE.COM)

# 1ST STAGE

## BOARD OF DIRECTORS

### Chair

Jack Wilbern

### Secretary

Jacqueline A. Cookston

### Treasurer

Tom Manteuffel

Elizabeth R. Benson  
Dominique Callins  
Mitchell Falter  
Howard J. Forman  
Chidi I. James  
Judith Marshall Jobbitt  
Anthony G. LaBarbera  
Douglas C. Lovejoy  
Martha B. McGrane  
William T. Newman, Jr.

## 1st STAGE ARTISTIC ASSOCIATES

Debra Crierie - Designer  
Kathryn Kawecki - Designer  
Jessica Lefkow - Actor/Director  
Kay Rzasas - Designer  
Deidra LaWan Starnes - Actor/Director  
Jacob Yeh - Actor

## 1st STAGE FOUNDING ARTISTIC DIRECTOR

Mark Krikstan

## 1st STAGE FOUNDING ARTISTS

Lucas Beck  
Deb Crierie  
Jane Margulies Kalbfeld  
Nathaniel Krause  
Alex Mandell  
Peter Van Valkenburgh  
David Winkler  
Cheryl Patton Wu

## SPECIAL THANKS FOR THEIR ASSISTANCE WITH THIS PRODUCTION

Arlington Scene Shop  
The Keegan Theatre  
Olney Theatre Center  
Shakespeare Theatre  
Joe Chuckran  
Jared Davis  
Alison Edwards  
Christine Hutcherson  
Melissa Nicholson  
Gordon Nimmo-Smith  
John Perry  
Jay Reiziss  
Emily E. Sudbrink  
Jill Young

## STAFF

### Artistic/Executive Director

Alex Levy

### Associate Producer

Emily Wall

### Director of Engagement

Heidi Fortune Picker

### Associate Artistic Director

Deidra LaWan Starnes

### Director of Community Relations

Eileen Mandell

### Casting Director Emeritus

Jane Margulies Kalbfeld

### Web and Media Director

Robin Harris, Harris Design Inc.

### Technical Director

Jack Beckey

### Connectivity Director

Audra Jacobs

### Box Office Associates

Sonia Hossain

Ryan Anthony

Rashaud Matthews

### Learning and Engagement Facilitators

Ruth Diaz

Pauline Lamb

Mary Myers

Matthew Sparacino

## TECHNICAL CREW

### Lead Electrician

Lillian Moki

### Electricians

Angela Armstrong

Sean Penny

Kristop Rosario

### Carpenters

Zoe Tompkins

Gabriella Trevino-Bandy

### Scenic Charge

Blake Mihm

### Painter

Fred Via

### Stitcher

Jeanette Christensen

### Audio Engineer (A1)

Jordan Patnett

## 1st STAGE THEATRE

### Architects

Butz-Wilbern, Ltd.

### General Contractor

M. Raina Associates

## 1st Stage

1524 Spring Hill Road

Tysons, VA 22102

1stStage.org • (703) 854-1856