

1st
STAGE 



The Phlebotomist

February 17 - March 6, 2022



1st Stage
With generous support from
Sandy Laeser, in honor of Dick Laeser
Presents

THE PHLEBOTOMIST

WRITTEN BY
ELLA ROAD

DIRECTED BY
ALEX LEVY

FEATURING

JOSH ADAMS*
as Aaron

SASHA OLINICK*
as David

ANNE BOWLES*
as Char

LYNETTE RATHNAM*
as Bea

PRODUCTION & DESIGN

DIRECTOR
ALEX LEVY

LIGHTING DESIGN
HELEN GARCIA-ALTON

INTIMACY COORDINATOR
LORRAINE RESSEGER

ASSISTANT DIRECTOR
DEIDRA LAWAN STARNES

STAGE MANAGER
BAILEY HOWARD*

PROJECTIONS DESIGN
PATRICK LORD

SET DESIGN
KATHRYN KAWECKI

TECHNICAL DIRECTOR/
PROPS DESIGN
ASH JEFFERS

ASSOCIATE PROJECTION
DESIGN
HAILEY LAROE

COSTUME DESIGN
MOYENDA KULEMEKA+

DIALECT COACH
CHRISTINE HIRREL

ASSISTANT PROJECTION
DESIGN
CLARA ASHE-MOORE

SOUND DESIGNER/
ORIGINAL MUSIC
SARAH O'HALLORAN

This production is made possible in part by gifts from
our generous 1st Stage donors and with the support of



The Phlebotomist premiered at the Hampstead Theatre in London in 2018.



* Member of Actors' Equity Association, the Union of Professional Actors and Stage Managers in the United States, appearing under a Special Appearance Contract.
+ Member, Stage Directors and Choreographers Society

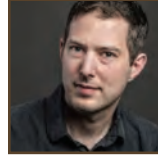
THE CREATORS

THE PLAYWRIGHT



ELLA ROAD is a writer and actor from London. Her first play *The Phlebotomist* premiered at the Hampstead Theatre Downstairs in Spring 2018, and transferred to the Main House in Spring 2019. The play was nominated for an Olivier Award for Outstanding Achievement in Affiliate theatre, and was a finalist for The Susan Smith Blackburn Prize. Ella was a Soho Theatre Young Writer 2017/18, one of the Bush Theatre's 'Emerging Writers' 2018/19, and was on the BBC Drama Writers Programme 2019/20. Her newest play *Fair Play* opened at the Bush Theatre in December 2021. She is also in development on a number of projects for TV and Film, including a television adaption of *The Phlebotomist*. Other film credits include *The Wyrd*, and the latest 'Stand Up to Cancer' video campaign for RSA Films. She also acts for theatre, screen and radio. Ella is co-founder of the new writing company Flux Theatre, which aims to champion new voices in the arts. She also teaches English, facilitates creative writing workshops, and writes the occasional poem.

THE DIRECTOR



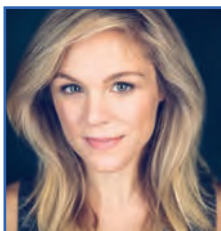
ALEX LEVY joined 1st Stage in 2014 as the Artistic/Managing Director. Since then, the company has won several awards including the American Theatre Wing's "National Theatre Company Grant" and was named "One of America's most impressive smaller theater companies" by The Wall Street Journal. In 2020, 1st Stage won five Helen Hayes Awards including "Outstanding Production." His 1st Stage directing credits include *Secret Things*, *Trying*, *columbinus*, the American premiere of *Hero's Welcome*, the world premiere of *Swimming with Whales* (6 Helen Hayes nominations including "Outstanding Director"), *The Farnsworth Invention* (6 Helen Hayes Nominations including "Outstanding Director"), *Jesus Hopped the 'A' Train* (winner of 2 Helen Hayes Awards and The *BroadwayWorld* Award for "Outstanding Production of a Play"), the regional premiere of *Trevor* (2018 Helen Hayes nomination for "Outstanding Production of a Play"), *Lobby Hero* (named best regional revival of 2016 by *The Wall Street Journal*), *Proof*, *The Good Counselor* (*BroadwayWorld* DC Award for "Best Director of a Play"), and the world premiere of *Now Comes the Night*. Before joining 1st Stage, Mr. Levy served as the Artistic Director of Ballybeg Theatre in New York City and Artistic Director of Pegasus Players in Chicago. In March 2017, his award-winning play *Safe at Home* was produced at Mixed Blood Theater at CHA Field, the home of the St. Paul Saints in St. Paul, Minnesota. Mr. Levy holds an MFA in Directing from The University of California-Los Angeles.

MEET THE CAST



JOSH ADAMS (AARON) 1st Stage: *The Cripple of Inishmaan*. Mosaic Theater: *Theory, The Agitators, Hooded, Or Being Black for Dummies*. Washington Stage Guild: *Bloomsday*. Folger Theatre: *Love's Labor's Lost*. Theater J: *Trayf, The Last Night of Ballyhoo, The Sisters Rosensweig, The Intelligent Homosexual's Guide...* Theater Alliance: *The Events* (Robert Prosky Award for Outstanding Lead Actor in a Play – Helen), *The Raid*. Rorschach Theatre: *REYKJAVIK*. Keegan Theatre: *American Buffalo* (Ireland Tour), *An Irish Carol, A Few Good Men* (Ireland Tour). We Happy Few Productions: *Henry V, Chalk, The Tempest*. Everyman

Theatre: *An Inspector Calls*. Woolly Mammoth: *Appropriate*. Live Art DC: *The Merry Death of Robin Hood, R+J Star-Cross'd Death Match*. Scena Theatre: *The Cripple of Inishmaan*. Studio Theatre: *The Big Meal*. Josh received a BA in Theatre and minor in Political Science from University of California: San Diego.



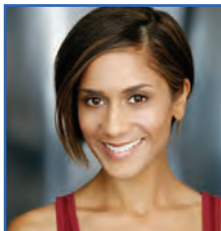
ANNE BOWLES (CHAR) is thrilled to be returning to 1st Stage after having previously appeared in *Hero's Welcome*. Other credits include— NEW YORK: *Collected Stories, reasons to be pretty, Inherit the Wind* (Broadway) and *Make Believe* (Off-Broadway). REGIONAL: *Shear Madness* (Kennedy Center), *Love Actually* and *Twist Your Dickens* (Second City/Kennedy Center), *Steel Magnolias, The Heiress* (Pioneer Theatre), *Picnic* (Centerstage), *Of Mice and Men* (Cincinnati Playhouse/St. Louis Rep), *The Wolves, Fat Pig, This is How It Goes* (Studio Theatre), *Rosencrantz and Guildenstern* (Shakespeare Theatre of NJ),

The Matchmaker (Ford's Theatre), *Elizabeth the Queen* (Folger Theatre), *columbinus* (Roundhouse Theatre), *The Last Schwartz* (Theatre J). TELEVISION: *The Good Wife, House of Cards, Turn*. EDUCATION: BA in Drama from Catholic University.



SASHA OLINICK (DAVID) returns to 1st Stage having performed previously in *Fly By Night* (Helen Hayes award Best Ensemble/ Best Musical) LOCAL CREDITS INCLUDE: *Beauty & the Beast* (Olney Theatre Center); *Einstein's Wife* (ExPats Theatre); *Love Sick, The Last Night of Ballyhoo, The Last Schwartz, G-d's Honest Truth, Life Sucks, Our Class* (Theater J); *Secrets of the Universe* (Helen Hayes nomination Best Actor), *Abominable, A Man, his Wife and his Hat* (The Hub Theater, company member); *Oslo, Amadeus, The Book Club Play, A Prayer for Owen Meany* (Round House Theatre); *The Music Man* (Arena Stage); *King*

John (Folger Shakespeare Library); *Chasing George Washington, OLIVÉrio* (Kennedy Center TYA); *Jungle Book, Wind In The Willows* (Imagination Stage); Sasha teaches acting at Montgomery College, the National Conservatory of Dramatic Art and through the Educational Theatre Company.



LYNETTE RATHNAM (BEA) is thrilled to be making her 1st Stage debut! Previous projects include: *It's Christmas, Carol!* (Oregon Shakespeare Festival); *A Wind in the Door* (Kennedy Center); *Kid Prince and Pablo* (Kennedy Center); *Shame 2.0* (Mosaic Theater Company); *4,380 Nights* (Signature Theatre); *Death of A Salesman* (Ford's Theatre); *Our War* (Arena Stage); *Mockingbird* (Kennedy Center); *When January Feels Like Summer* (Mosaic Theater Company); *The Trojan Women* (Taffety Punk); *The Fire and The Rain* (Constellation Theatre Company); *The Fantasticks* (Rep Stage); *Glassheart* (Rorschach); *Illyria, Julius Caesar* (Virginia

Shakespeare Festival); *The Wings of Ikarus Jackson* (Kennedy Center); *A Midsummer Night's Dream, Twelfth Night, All's Well that Ends Well* (Maryland Shakespeare Festival); *In the Blood; Lyme Park* (The Hegira).

THE PRODUCTION TEAM

CLARA ASHE-MOORE (PROJECTION DESIGN ASSISTANT) is a lighting and projections designer from Asheville, NC. In May of 2020 she graduated with a BFA in Lighting Design from University of North Carolina School of the Arts. She is currently a Kennedy Center Kenan Fellow specializing in Lighting and Projection Design for the 2021-2022 season. Some of her post-grad credits include Assistant Projection Designer on *Hedwig and the Angry Inch* (Olney Theatre Center), *Dreamgirls* (Artscentric at Baltimore Center Stage), and *Ernest Shackleton Loves Me* (Skylight Music Theatre).

HELEN GARCIA-ALTON (LIGHTING DESIGN) is elated to be back in the theatre. After moving back to the DMV with her MFA from the University of Tennessee in Knoxville this past Spring, she has continued to forge new relationships with theatre companies and is happily living the dream. Upcoming and current projects include: *World Builders* (Prologue), *Is Edward Snowden Single?* (Single Carrot Theatre), *Twigs & Bone* (Nu Sass Productions), *High School Musical* (McDonogh School), and *Always Patsy Cline* (Clarence Brown Theatre at the University of Tennessee in Knoxville).

CHRISTINE HIRREL (DIALECT COACH) is a theatre professional and speech-language pathologist who has coached shows at The Kennedy Center, Woolly Mammoth Theatre Company, Theater J, WSC/Avant Bard, Quotidian Theatre Company, and others. On stage, Ms. Hirrel's dialect work can be enjoyed late this spring when she performs the role of Sister Felicity in Tennessee Williams' *Suddenly Last Summer* with Avant Bard Theatre in Arlington.

BAILEY HOWARD (STAGE MANAGER) (she/hers) *The Phlebotomist* is Bailey's first show with 1st Stage. Prior to this show she worked as the season Assistant Stage Manager at Greenbrier Valley Theatre in Lewisburg, WV and in the Chicago area before the 2020 shutdowns. Chicago shows include *Alabaster* (16th Street Theatre), *Suessical Jr.*, *Shrek: The Musical Jr*, *Something Rotten!* and *Footloose* (Marriott Theatre), *Wild Boar* and *Great Expectations* (Silk Road Rising). She earned her BA in Theatre Arts from Roanoke College in Salem, VA and did a post-grad internship at B Street Theatre in Sacramento, CA. Raised primarily in Tennessee, she has lived in 7 states across the United States.

ASH JEFFERS (TECHNICAL DIRECTOR/ PROPS DESIGN) (they/them) is the Interim Co-Technical Director at 1st Stage, and the Technical Director and Props Designer for *The Phlebotomist*. They previously worked as Technical Director for *Secret Things* (1st Stage). Ash is a graduate of Duke University, where they served as Scenic Designer for *Medea* (Duke Theater Studies) and Production Designer for *Citizen: An American Lyric* (Duke Theater Studies). From 2019 to 2021, Ash was the Technical Supervisor for Hoof 'n' Horn, Duke's student-run musical theater organization. They acted as Technical Director for *In The Heights* (Hoof 'n' Horn) and *Spring Awakening* (Hoof 'n' Horn). Ash is from and currently lives in Maryland.

MOYENDA KULEMEKA (COSTUME DESIGN) 1st Stage: *Trying; The Brothers Size; Signature Theatre: Daphne's Dive; Detroit '67; Syntetic Theater: Cinderella; GALA Hispanic Theatre: La tía Julia y el escribidor; Exquisita Agonia; La vida es sueño; Como agua para chocolate; En el tiempo de las mariposas; La foto; Mosaic Theater: Fabulation; Adventure Theatre: Tinker Bell; Theater Alliance: A Chorus Within Her; NextStop Theatre: East of Eden; Singin' in the Rain; Fallen Angels; Rorschach Theatre: Distance Frequencies: Transmission; Working in DC: Working, A Musical; The Welders: Switch; The In Series: From U Street to the Cotton Club; We Happy Few: Macbeth; The Dog in the Manger; Pericles; Young Playwright's Theatre: Three Cheers to Grace; Caine Lyric Theatre: A Raisin in the Sun. www.moyendadesigns.com.*

KATHRYN KAWECKI (SET DESIGN) Previous 1st Stage credits— *Trying, columbinus, The Farnsworth Invention, The Good Counselor* (costume & set), *Hero's Welcome, Lobby Hero* (costume & set), *Ma Rainey's Black Bottom, Old Wicked Songs* (costume & set), *Proof* (costume & set; HHA Helen Nomination for scenery), *Swimming With Whales, and Trevor* (costume & set). Upcoming: *Othello/Desdemona* (INseries, costume). DMV— *Anne of the Thousand Days* (Chesapeake Shakespeare); *You...or Whatever I Can Get* (Flying V, costume); *The Late Wedding* (Hub Theatre); *Enron* (4615). Regional: *The Taste of It* (NYC, costume & set; NYIT Nomination); *Elijah* (Boulder; Henry Nomination); *Avenue Q* (Lyric Stage, Boston); *My Fair Lady* (Boston; IRNE Nomination). She teaches at Bowie State University and previously taught for Gettysburg College and NDSU. www.kaweck-art.com

THE PRODUCTION TEAM

PATRICK W. LORD (PROJECTION/VIDEO DESIGN) DC: *columbinus* (1st Stage); *Earthrise*, *Voyagers*, *Digging Up Dessa*, *Where Words Once Were* (The John F. Kennedy Center for the Performing Arts); *Hamlet*, *Twelfth Night* (Shakespeare Theatre Company); *Hedwig and the Angry Inch*, *A Christmas Carol* (Olney Theatre Center); *Fame: The Musical* (Gala Hispanic Theatre); *The Phantom of the Opera* (Synetic Theatre); *Love and Information*, *Building the Wall*, *Blackberry Winter* (Forum Theatre); *Mnemonic* (Theatre Alliance); *Bridges of Madison County*, *Big Fish*, *American Idiot* (Keegan Theatre); *Outside the Lines* (Arts on the Horizon); NATIONAL TOUR: *Hairspray* (Video Designer); *Mean Girls* (Animator) NEW YORK: *Where Words Once Were* (Lincoln Center); *The Bodyguard: The Musical* (White Plains Performing Arts Center) REGIONAL: *South Pacific* (Flatrock Playhouse); *Desvelado* (Peppercorn Theatre); *Beauty and the Beast*, *Chitty Chitty Bang Bang* (Croswell Opera House). MFA, The University of Texas at Austin. www.patrickwlord.com.

SARAH O'HALLORAN (SOUND DESIGN and ORIGINAL MUSIC) is a sound designer and composer. She has previously worked at 1st Stage Theatre on *The Brothers Size*, *Swimming with Whales*, *Trevor*, and *When the Rain Stops Falling*. Other credits include Theater J: *Compulsion or the House Behind* and *Talley's Folly*; Studio Theatre: *Cry it Out*; Olney Theatre Center: *The Humans*, *Our Town* and *Labour of Love*; The Second City/Woolly Mammoth Theatre: *She the People: The Resistance Continues*; Everyman Theatre: *Be Here Now*, *Proof*, and *Dinner with Friends*; Rep Stage: *E2*, *The 39 Steps*, *The Heidi Chronicles* and *Things That Are Round*; Mosaic Theater: *The Return*; Theater Alliance: *A Chorus Within Her*; Forum Theatre: *Nat Turner in Jerusalem*, *What Every Girl Should Know*, and *Dry Land*.

DEIDRA LAWAN STARNES (ASSISTANT DIRECTOR) Associate Artistic Director at 1st Stage, is a theatre educator, performer, and director throughout the DMV. 1st Stage acting credits include *The Member of the Wedding* and *The Good Counselor*. Other regional credits include *The Amen Corner*, *Amadeus*, *Milk Like Sugar*, *The Gospel of Lovingkindness*, *Julius Caesar*, *Invisible Man* (Helen Hayes Award Most Outstanding Ensemble), *Intimate Apparel* (Helen Hayes Award), *A Raisin in the Sun*, *I Have before Me a Remarkable Document....*, *Two Trains Running*, *Spunk*, *Twelve Days of Christmas*, *Charlotte's Web*, *Passing Strange*, *In the Red and Brown Water*, *Radio Golf*, *King Lear*, *Doubt*, and *for colored girls who have considered suicide when the rainbow is enuf*, directed by Ntozake Shange. Film credits include *Chasing Refuge*, *Nocturnal Agony*, and *Ladder 49*. Directing credits include *A Civil War Christmas* and *Ma Rainey's Black Bottom* (Helen Hayes Nomination for Most Outstanding Production), *for colored girls who have considered suicide when the rainbow is enuf* (Theatre Alliance), *Street Life and The Name Game* (DC Theatre Festival), *Soul Collector* (Port City Playhouse), *Once on This Island Jr. and 101 Dalmatians* (The Theatre Lab Summer Musical Camp for Tweens). Her ten-minute play *The Three Amigos* was presented at African Continuum's *Blaze of Horns II* Play Reading Festival. She holds a BA in Theatre from the University of Maryland, an MFA in Drama from the University of Connecticut, and an MA in Producing Film, TV, and Video from American University. She is currently an adjunct professor at Bowie State University.

UNDERSTUDIES

TYLER HERMAN

ANIA OSINSKI

THE INTERLUDES CAST

LAURA ARTESI
TERESA CASTRACANE
AMANDA FORSTROM
CATIE FLYE
TYLER HERMAN
JEREMY HUNTER

PATRICK JOY
JANE MARGULIES KALBFELD
RAMYA KAPPAGANTULA
NIKKI MIRZA
SARAH O'HALLORAN
ANIA OSINSKI

FARRELL PARKER
TUYET PHAM
HARRISON SMITH
DEIDRA LAWAN STARNES
JACOB YEHL



A SPECIAL THANK YOU TO THE PRODUCER OF

THE PHLEBOTOMIST

SANDY LAESER HONORING DICK LAESER AND OUR FAMILY

It feels so good returning to 1st Stage in person, even if in a different way than before the pandemic. Learning to treasure, even more, those I care about and not take experiences like the theater for granted have been major outcomes from the pandemic



for me. It's important not to lose sight of what is important in life and to stay focused on what matters to each of us as individuals, as well as collectively, as a community and as a society. *The Phlebotomist* is a powerful, thought-provoking, and haunting drama that made me ponder these issues.

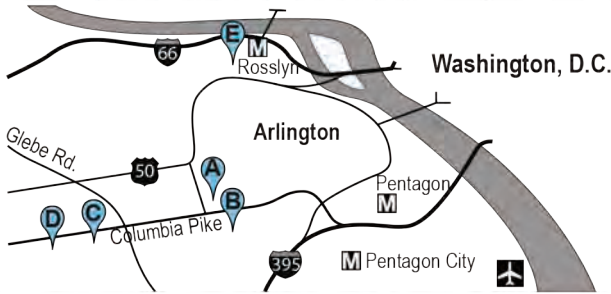
As a piece of excellent dramatic theater, *The Phlebotomist* will not disappoint you. It is gripping, unsettling and unlimited in the emotions it elicits, addressing ethics, social order, and how we value each other. Thank you to 1st Stage for selecting this play as part of the 2021-2022 season.

BECOME A PRODUCER

Producerships give 1st Stage the foundation to take risks and offer the necessary resources to a production's creative team to realize their vision. It is a vital partnership that provides the opportunity to elevate the work to a higher level, bringing in the most talented artists and designers to create world-class theatre right here in Tysons.

**Interested in what it means to be a 1st Stage producer?
Contact Heidi Fortune Picker for details at heidifortune@1stStage.org**

SIMPLY GREAT APARTMENTS



www.ApartmentsNearDC.com

Walkable Lifestyle • Amazing Rent - Incl. ALL Utilities*
Five Min. to D.C. • Easy Commuter Options
Garden & Mid-Rise Apartments: Studio, 1, 2 & 3 Bedrooms
Premier Landscaping • Free Parking • Express Bus**



Dorchester Towers

703-979-3800
leasing@dorchester Towers.net
www.DorchesterTowers.net
*Pool, Tennis, Party Room,
Rose & Roof Gardens*



Dorchester Apartments

703-920-0230
leasing@dorchesterapartments.net
www.DorchesterApartments.net
Pool, Fitness Center, Bike Room



Oakland Apartments

703-892-2118
leasing@oaklandapts.net
www.OaklandApts.net
*Fitness Center, Pool Access,
Except Electric



Westmont Gardens

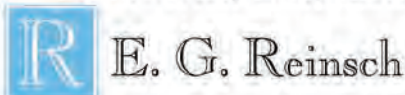
703-920-0809
leasing@westmontgardens.net
www.WestmontGardens.net
Pool, Fitness Center



Arlington Boulevard Apartments

703-979-3800
leasing@arlingtonboulevardapts.com
www.ArlingtonBoulevardApts.com
***Walk to Rosslyn Metro, Pool &
Tennis Access, *Except Electric*

**REFER A RESIDENT
RECEIVE \$250!**



For over 70 years, the E. G. Reinsch Companies have been family owned and operated, providing excellent apartment homes to our growing community.

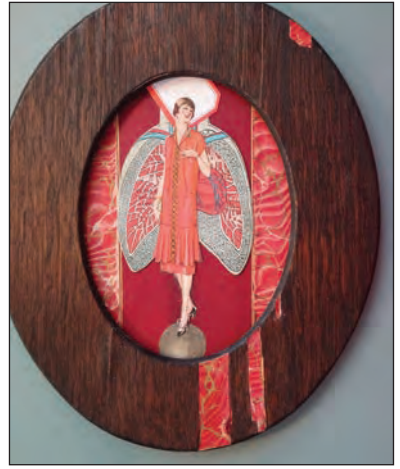
IN THE GALLERY

Little Theaters

ART BY

J. FORD HUFFMAN

Little theaters. Stages. Mixed-media assemblages, often enclosed in boxes. The works, says Art Registry, are “enigmatic and address the formal elements of art: Line, color and form.”



The Angel Aorta (Our Lady in Red)
10 1/2" w x 12 1/2" h x 3/4" d
Mixed-media assemblage

Many are architectural, some are abstract, some are figurative, and many are in collections in the United States and Japan, France and Germany. The work has been exhibited at galleries such as Watgate and commissioned by National Building Museum.

Huffman designed sets for two world-premiere plays at Oglebay Institute's Towngate Theater in Wheeling, W.Va., interned in theater design at Shaw Festival in Ontario, and worked with college and community theaters in W. Va. and New York.

He consults at publications everywhere from Delhi to Dubai and directed the redesign of Las Vegas Review-Journal in 2017. Until 2009 he was a deputy managing editor at USA TODAY, whose offices are down the road from 1st Stage.

www.pbase.com/jfordhuffman/stages

YES Pass for High School Students

1st Stage offers a free subscription for all mainstage shows to every high school student in Fairfax County. The **YES Pass** ensures that no student is denied access to live theater due to economic barriers and guarantees that all young people will have an opportunity to be part of the conversation and the artistic life of Fairfax County. To register a student, contact Deidra Starnes, Associate Artistic Director at deidrastarnes@1stStage.org or call (703) 854-1856.

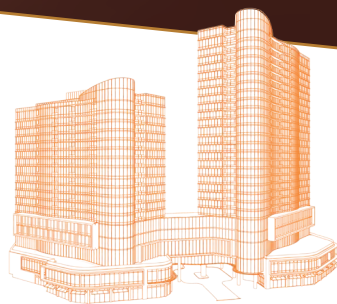


defy expectations.

DISCOVER LUXURY OF A DIFFERENT KIND

Introducing The Mather in Tysons, Virginia—a forward-thinking destination for those 62 and better projected to open in 2023.

Forget what you thought you knew about senior living. Inquire today.



 the
Mather



09/19 1ST PB

(703) 348.3752 | themathertysons.com

DebbieHouses.com
ACCENTUATE THE POSITIVE



Deborah Ford Larson

Long and Foster Realtors

Specializing in Northern Virginia Properties since 1975

Also licensed in Sanibel and Captiva Islands, FL

CELL/TEXT: 703-966-9474

EMAIL: deborah.larson@longandfoster.com or sales@debbiehouses.com

Visit my website: www.debbiehouses.com It will make you smile!



Tyson's Realty Inc.

PAULINE THOMPSON

Founder, President, CEO

8321 Old Courthouse Road - 140
Tysons Corner, VA 22182

Off. 703-893-5700
Cell: 703-599-1488
Fax: 703-893-6859

EM: TYSONSREALTY@AOL.COM

Retail, Office, Industrial, Apts. Asset Mgt.

SEE YOUR AD IN THE NEXT 1ST STAGE PROGRAM

1st Stage offers a season of plays, each with its own specially designed program. Your ad, printed in the program, will be seen by approximately 2,000 audience members for each performance run! To reserve a space for your ad, contact Emily Wall at emilywall@1stStage.org or call (703) 854-1856.

THANK YOU OUR DONORS

(January 1, 2021 – December 31, 2021)

Thank you to all who make our work possible.

\$30,000 and above

Elizabeth R. Benson
Sandy Laeser
Martha and John McGrane
Kay Rzasza and
Deb Crierie
Jack Wilbern and
Patricia Tetro

\$15,000-\$29,999

Anonymous
Jacqueline Cookston and
Anne Nolan
Howard and Elaine Forman
Kathleen Gilles Seidel
Margaret Sheeran and
Tom Manteuffel

\$10,000-\$14,999

Janice Bigelow, in memory
of Derek Bigelow
Eleanor and Richard
Bochner
John and Patricia Dyer
Theodore Gold and
Margaret Gering
Bootsie and
Humo Humenansky
Matt Korn and Cindy Miller
Susan and Donald Levy
Eileen Mandell

\$5,000-\$9,999

Judye Groner
John and Meg Hauge
Raymond Saulino and
Debbie Cerulli
Rochelle Zohn

\$2,500-\$4,999

Lori and Paul Carbonneau
Thomas Goodwin and
Cheryl Matheis
Holly Hassett
Deborah Kahn and
Harris Miller
Kathleen and
Anthony LaBarbera
Alex Levy
Mike and Tara Levy
William Newman and
Sheila Johnson
Lynne and Bobby Silverstein
Paul and Kathie Westpheling

\$1,000-\$2,499

Anonymous
Gene and Pam Bacher
Laura Bromberg and
Robert Martin
Edmund and
Dolores Bujalski
Carol Caparosa
Mark and Cynthia Carter
Robert Cookston
Pat and Wesley Davis
Gail and John Howell
Marty and Bonnie Hurwitz
Chidi and Faith James
Judith Jobbitt and
Thomas Marshall
Jane and Brad Kalbfeld
Stephanie Katz
Laurel Kent
Renee Klish
Shawne Lampert

Adrian and Marcia Lund
Wesley MacAdam
Alan MacAdams and
Ellen Dykes
Gene and Melissa Nicholson
John Perry and Jeff Mintzer
Thomas Pierce and
Lu Ann Dillon
Barry Sullivan and Alan Scott
Joseph and Julie Warin

\$500-\$999

Donald Adams and
Ellen Maland
Caron Anton
Lunette Arledge
Kate Bryer
Phyllis Cela and Gary Sidell
Andrew Clark
Liz and Tom Corwin
Stephen Cruze
Timothy and
Anna Donaldson
Linda Gehr
Virginia Geoffrey and
John Andelin
Alfred and Lynne Groff
Bob Guberman
Barbara Hawthorn
Robert Hebda
Gregory and Joy Hildeman
Barry Holt and Julie Samuels
Dr. Sari Hornstein
Timothy Hulsey
Barbara J. Jacob and
Douglas Kleine
Ilana Kats
Robyn Lady and
Stephanie Basl
Hannah and Chuck Lefton
Keith and Bari Levington
Nancy Limprecht and
Rick Haines
Karen and John Mansfield
Daniel and Judith Mills
Marsha Mofson and
Jeff Dannick
Ronald and Ellen Neubauer
Katie Newland
Rebecca Perez
David and Joy Peyton
Heidi and Ari Picker
Sue and Jim Price
Andrienne and
Edward Schmitz
Patricia Seale
Nigel and Linda Smyth
Denny and Jan Towers
Ilene and
Stan Trachtenberg
Carlos Velazquez
Sherrill Wells
Jeanne and Jim Wolfson
Linda Young and
Steve Sibener

\$250-\$499

Paul and Nancy Allard
Cherie and Bill Artz
Michael and Lissa Barry
Sabra Benson
Henry and Joan Botuck
Joel and Carol Breitner
Sandra Buratti
Louise and Alan Caldwell

Mike Checuga
Julie Cline
Linda and John Cogdill
Carolyn and Ladd Connell
Barbara Conner
Janice Crawford
Isabelle Cummings
Arlene Edwards
Uma Ferrell
Carol and Barry Forman
Lawrence Franks and
Ellen Berelson
Mark and Diana Fredenburg
Gerald Gleason and
Naomi Robin
Sharon Goley
Terri Hauck
Lisa Hoskins
Lois Ireland and
Pierre Huggins
William and Debby Iwig
James and Barbara Korman
Sonya Livingston
T. Michael Louden
Janet Minkler
Marcela Montes
Carl and Undine Nash
Phillip and
Chris Niedzielski-Eichner
Nancy Pазienza
Dr. Norval Peabody
Sean Perryman
Carol and Doug Powell
Adam Proujansky
Roz Rakoff
Steven and Pamela
Rearden
Mark and Ginni Richards
Jeffrey and
Daniele Robbins
Edward Robinson
Mark and Donna Samblanet
Joan Schaffer
Mary Schmidt and
Russell Libby
Allan Shapiro and
Jaye Helferd
Ellen Lloyd Starns
Sarah Staveteig and
Terry Ford
Igor and Donya Timofeyev
Jim Weingartner
Gregory Williams
Sarah and Matt Wilson

\$100-\$249

Mary Ann Allin
Rekha and Craig Arness
Michael Bagwell
Jessica Balick
The Ballard Family
Bob Bartlett
Michaele Battles
Barbara Bear
Sheryl Beitsch and
Jerry Menchhoff
George and Gail Bergquist
Sheila Billingsley
Jennie Bonney
Karen Bopp
Paul Brinker
Sandee Byrne
Eric and Diana Chafetz

Howard Cincotta and
Deborah Conn
Louise K. Crane
Bernard DeLeo
William Dickerson
Amy and Bo Duma
Steve and Carolyn Eagle
Chris and Angela Ehemann
Nicole Erbay
Andrea Field
Tom and Jenny Fortune
Dagne Fulcher
Mickey Fuson
Constance Gartner
Kenneth Glaser and
Mary Kleist
Sol and Nina Glasner
Stephen Gold and
Wini Atlas
Laurie Goldberg
Nadja Golding
Diane Gorman
Gabe Greene and
Mia Fiorella
Robert Greenfield and
Eileen Lawrence
Jonathan Groisser and
Hana Newcomb
Jessica Haines
Julie and James Hamilton
Thomas Harter
Laurence Hausman
Marie Himel and
John Butler
David Hindin and
Sally Bloomberg
Scott Holden
Nancy Hopkins and
Jay Volkert
Elizabeth and
Michael Jablin
Kenneth and Phyllis Jacobs
Debbie and Leo Jardot
Elaine and Paul Jean
Sherry Joslin
Carem Kamberg and
Michael Kosecoff
Susan Kamener and
Brian Murphy
Bonnie Kawecki
Kathryn Kawecki and
Caroline Mulcahy
James and Jean Keeney
Pam Kendrick
Bryan and Karen Kinsey
William Kirby
Christopher Kriz
Katherine and
Robert Kroehler
LuAnn and Len Levitt
Roman and Beth Lewyckyj
Cheryl Lindstrom and
Jose Pardo-Kronemann
Michael Lipsky and
Mariette Newcomb
Judith Macon
Kathy Maher
Donna and Marty Malarkey
Madeline and
Gerald Malovany
Madeleine McAlister
Barbara McBride

THANK YOU OUR DONORS

(January 1, 2021 – December 31, 2021)

Thank you to all who make our work possible.

\$100-\$249 continued

James and
Jennifer McGrane
Peggy McNulty
Patty McTigue and
Chris Westra
Jennifer Mendenhall and
Michael Kramer
Maureen and
Richard Mercier
Gay Merrill
Paulette and Mack Miller
Judith Miller
Nell Minow
Lyn Moen
Gabriel and Denisse Montes
Kristin Moyer

Jasper Napoli
Florence and Ferd Neider
Helen Nolan
Jenny Pate
Phyllis and Doug Payne
James and Susan Pittleman
Ann Marie Plubell
Sid and Ardith Polk
Karen Pyeatt
Terri and Donald Rea
Norma Reck
Donna and Bill Reinhold
Gay Rogers
Suzanne Rothwell
Mary Rouvelas
Jonathan and
Lauren Rubenstein

Diane Ruzevich
Kathryn Sampson
Jean Schreier and
Margarita Lopez
Estelle Schwalb
James and Beverly Seacord
Paul Seidman
Sandra and David Sellers
Barbara Sarshik and
Andy Pike
Jim and Ann Sherman
Beatrice and Richard Shields
Lisa Shumate
Sam and Susan Simon
Becca Smith
Lisa Sockett and
Andrew Joskow

Steven Spayd
Richard Stawarz
Mary Szpanka
David and Susan Talley
Tempie Tavenner
Mildred Thompson
Martha Trunk
Liz Vogt
Ken and Eleanor Wang
Karen and
Michael Weinberger
John and Barbara Wille
Lori Willis
Gail and Chris Wollenberg
Kristin Wood
Patricia Yates
Joan Zeigler

CORPORATE & FOUNDATION GIFTS

American Theatre Wing
ARTSFAIRFAX
Arts Forward Fund
Boeing Company
BOWA
Bright Funds Foundation
bwdarchitects
Caplin Foundation
Catalogue for Philanthropy
Compass Pro Bono
Elderberry Cottages Company
Ekko Title
Exxon Mobil Foundation
The Georgelas Group
Goldman, Sachs and Co.
Google, Inc.
Harris Design, Inc.

HBC Group/KW
India Hicks
HMA Associates, Inc.
International Monetary Fund
Kositzka, Wicks and Company
The Ruth and Hal Launders
Charitable Trust
The David and Reva Logan
Foundation
LS Technologies, LLC
The Mather Tysons
McLean Community Foundation
Meridian
The Morgan Fund
The Morningstar Foundation
The National Endowment for the Arts
The Neal Team

Pillar to Post
Pulcinella
M. Raina Associates
Rappaport Management Company
The Reinsch Pierce
Family Foundation
The Revada Foundation
The Ross Roberts Fund,
The Community Foundation
of Northern Virginia
The Share Fund
The Shubert Foundation
Sweet 120, LLC
Virginia Commission for the Arts
Walsh, Colucci, Lubeley and Walsh
YourCause, LLC

PRIME SQUARE FEET

"Prime Square Feet" are highly visible markers of your generous support for 1st Stage.

To purchase "Prime Square Feet" in the theatre contact Heidi Fortune Picker at heidifortune@1stStage.org.

Office – Kate Levy
Lobby – Kathleen Gilles Seidel

Hallway Wall – Mark Krikstan
Hallway Wall – Deb Cerie

Stage – LS Technologies LLC

Reception and Hallways

In Honor of Dick Laeser
In Memory of Steve A. Mandell
In Memory of Quin Mulcahy Kaweck
In Memory of Ben Saypol
ARTSFAIRFAX
Elizabeth Benson
Janice and Derek Bigelow
Mark and Cindy Carter
John and Meg Hauge
Bootsie and Humo
Edmund and Dee Bujalski
bwdarchitects
Jacqueline Cookston
Patty Dyer
Elderberry Cottages Company
Howard and Elaine Forman
Scott and Marjorie George

Theodore Gold and Margaret Gering
Harris Design, Inc.
Holly Hassett
Thomas Goodwin and
Mary Cheryl Matheis
Deborah Kahn and Harris Miller
Stephanie Katz
Kathleen and Anthony LaBarbera
Susan and Donald Levy
The Reva and David Logan
Foundation
Doug and Diane Lovejoy
The Ruth and Hal Launders
Charitable Trust
Kathy Maher
Tom Manteuffel and Margaret Sheeran
The Mather Tysons

Martha and John McGrane
McLean Community Foundation
The Morgan Fund of the
Seattle Foundation
The National Endowment for the Arts
Reinsch Companies
The Reinsch Pierce Foundation
The Revada Foundation
Raymond Saulino and Debbie Cerulli
The Share Fund
The Shubert Foundation
Linda Smyth
Stuart Teach
Virginia Commission for the Arts
Kathie and Paul Westpheling
Jack Wilbern and Patricia Tetro
Rochelle Zohn

Every effort has been made to ensure that donor lists are accurate. If you name is misspelled or omitted, please accept our apologies and inform 1st Stage at (703) 854-1856 or email the theatre at boxoffice@1stStage.org.

OUR PROMISE: GREAT THEATRE


We hope you will consider a donation to further the work 1st Stage does for our community. Our reality is that ticket sales only account for half of our revenue. The other 50% comes from generous donors like you. Please consider a contribution that will allow 1st Stage to continue providing the magic of theatre to you. Thank you for being a part of the 1st Stage family. We are honored to have you here.

Please, stop by the box office desk to make your contribution or send a check to PO Box 9384, Tysons, VA 22102.

GIFT CERTIFICATES

Give the gift of live theater at 1st Stage for birthdays, holidays and celebrations.

Available in denominations of \$25. Gift Certificates can be used at any regularly scheduled season performance.



Purchase
by visiting the
box office or by phone
at (703) 854-1856

In addition to offering **CAPTIONING** and **AUDIO DESCRIPTION** for selected performances throughout the season, 1st Stage now offers **ASSISTIVE LISTENING DEVICES** for all performances.

Captioned Performances

Captions for *The Phlebotomist* are offered **Thursday, February 24 at 7:30 pm; Friday, February 25 at 8:00 pm; Saturday, February 26 at 2:00 and 8:00 pm; and Sunday, February 27 at 2:00 pm.** Please see the box office for information about the captioning

Audio-Described Performances

The audio-described performance for *The Phlebotomist* is provided on **Sunday, February 27 at 2:00 pm.** Please request services at the box office when you check in.

Assistive Listening Devices

Assistive Listening Devices (ALDs) are available at every performance. Please request services at the box office when you check in.

Accessibility services are made possible through the generous support of the McLean Community Foundation and **ARTSFAIRFAX.**

UPCOMING at 1ST STAGE



THE MAMALOGUES

Written by Lisa B. Thompson

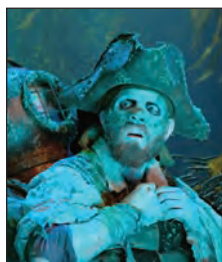
Directed by Angelisa Gillyard

April 21 - May 8, 2022

In this satirical comedy, three friends share the joys, challenges, and anxieties of being middle class single Black mothers in predominantly white suburbs. The story celebrates motherhood and community while exploring racial profiling on the playground and supporting your kid who is perpetually the Only Black Child (OBC). Follow their journey as they lean in and steer their children from pampers to college while navigating

their own road toward retirement.

“This play ...welcome[s] us all into the sisterhood of Black Bougie Single Mothers, and we share in many laughs.” —*The Austin Chronicle*



UNDER THE SEA WITH DREDGIE MCGEE

Written and Directed by Matthew Aldin McGee

June 2 - 19, 2022

This vibrant and unique theatrical event is designed for families, and features pirates, ghosts, laughter, and deep, immersive storytelling. This visually arresting, off-beat, and ambitious piece of theatre depicts a nearly-dead pirate being carried around by a deep-sea diver, spouting clever quips and snarky rejoinders as he crafts an underwater variety show designed to help him pass the time until he can find his own path to redemption and rediscovery.

2022 LOGAN FESTIVAL OF SOLO PERFORMANCE - DATES TBA

SUBSCRIBE AND SAVE

A subscription or Flex Pass is the easiest way to save money and guarantee your seat at 1st Stage's exciting 2021-2022 season!

Flex Pass

Choose: **Flex 7 (\$170)**, **Flex 14 (\$340)**, or **Flex 28 (\$680)**

The versatile Flex Pass gives you 7, 14, or 28 tickets to use anytime throughout the season. You can use all your tickets at once, singularly, or in groups. It's up to you! Want to bring your friends to see a show? You can even give the passes as gifts for birthdays, celebrations, or at the Holidays!

Save money – The Flex Pass will save you over 30% on season tickets.

Become a cultural ambassador – We know you love 1st Stage, so bring your friends and share the magic with them. We'll give you lots to talk about afterward!

Be choosy – One of the plays in the season not speaking to you? You can choose to skip it and use your Flex Pass tickets on the shows that excite you this season. There's a lot to choose from and explore!

Three-Play Subscription

Choose: **Individual (\$82)** or **Dual (\$164)**

Includes tickets for each show plus additional “bring a friend” pass(es).

Bring a friend – You'll get one (individual) or two (dual) additional tickets to bring friends to a season show, plus special discounts to neighborhood restaurants throughout the season!

Deepest Savings – You can get yours for almost 50% off by subscribing. That's still over a 40% discount at the senior rate. Plus, 25% off all classes at 1st Stage!

Never Miss a Show – When you purchase a subscription, you can choose all the dates you'd like to attend for the entire season, ensuring that you won't miss a show. Don't worry; if you change your mind later, we can exchange tickets for a different date (subject to availability). *Does not include special events.*

1ST STAGE

BOARD OF DIRECTORS

President

Jack Wilbern

Secretary

Jacqueline A. Cookston

Treasurer

Tom Manteuffel

Elizabeth R. Benson

Howard J. Forman

Chidi I. James

Anthony G. LaBarbera

Douglas C. Lovejoy

Martha B. McGrane

William T. Newman, Jr.

Raymond A. Saulino

1st STAGE ARTISTIC ASSOCIATES

Debra Crierie - Designer

Kathryn Kawecki - Designer

Jessica Lefkow - Actor/Director

Kay Rzasa - Designer

Deidra LaWan Starnes - Actor/Director

Jacob Yeh - Actor

1st STAGE FOUNDING ARTISTIC DIRECTOR

Mark Krikstan

1st STAGE FOUNDING ARTISTS

Lucas Beck

Deb Crierie

Jane Margulies Kalbfeld

Nathaniel Krause

Alex Mandell

Peter Van Valkenburgh

David Winkler

Cheryl Patton Wu

SPECIAL THANKS FOR THEIR ASSISTANCE WITH THIS PRODUCTION

Olney Theatre Center

Lion Rampant Productions, LLC

Megan Thrift - Robinson High School

Pixelumen Lab

PERFORMANCE PROGRAM

Chris Banks, designer

Emily Wall, writer

STAFF

Artistic/Managing Director

Alex Levy

Associate Producer

Emily Wall

Director of Engagement

Heidi Fortune Picker

Associate Artistic Director

Deidra LaWan Starnes

Director of Community Relations

Eileen Mandell

Casting Director Emeritus

Jane Margulies Kalbfeld

Web and Media Director

Robin Harris, Harris Design Inc.

Marketing and Communications Associate

Arielle Seidman-Joria

Box Office Associates

Sonia Hossain

Kelsey Jenkins

Interim Associate Producer

Eric Swartz

TECHNICAL CREW

Carpenters

Norton Projects, Inc.

Technical Director

Robin Harris, Harris Design Inc.

Master Electrician

Kat Darnell

Scenic Charge

Nadir Bey

Painter

Elaine Sabal

Costume Design Assistant

Bebe LaMonica

Dialect Coach

Christine Hirrel

Intimacy Coordinator

Lorraine Resseger

1st STAGE THEATRE

Architects

Butz-Wilbern, Ltd.

1st Stage

1524 Spring Hill Road

Tysons, VA 22102

1stStage.org • (703) 854-1856

1st
STAGE 